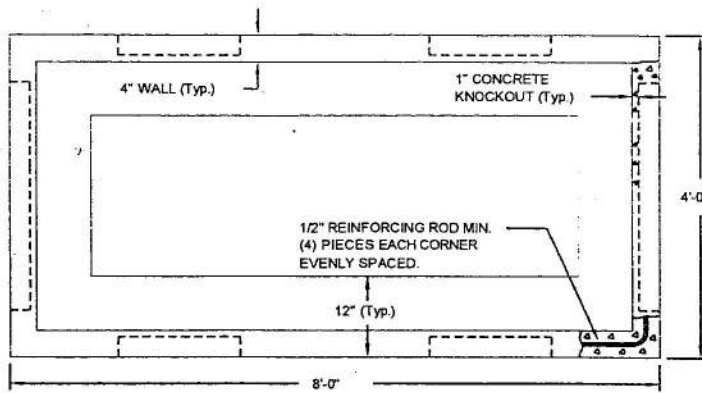
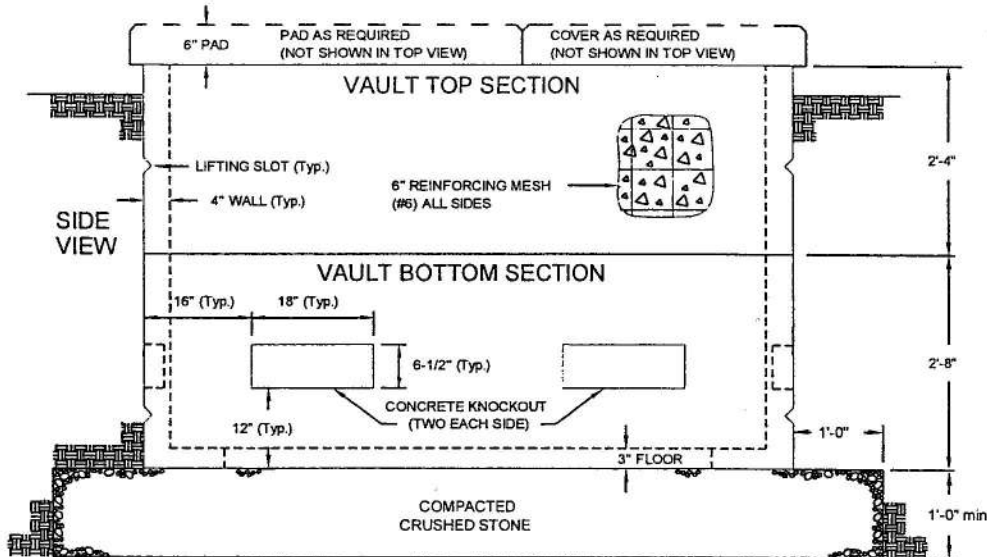


VAULT CONSTRUCTION - UNDERGROUND

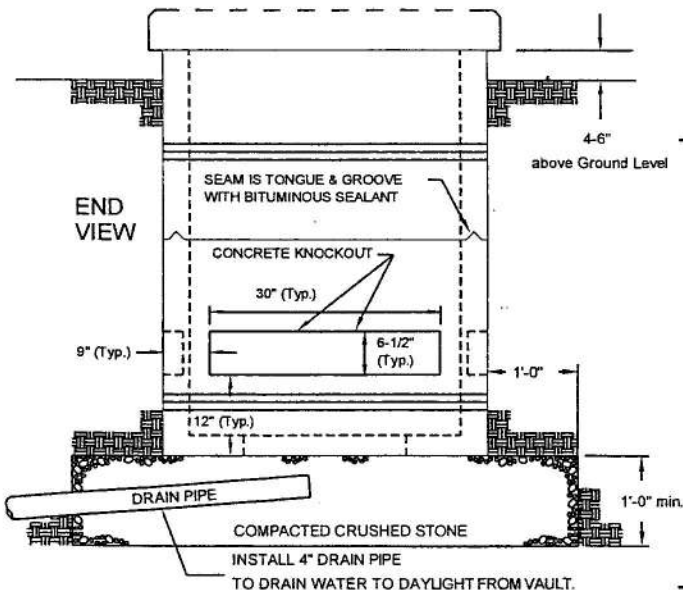
TOP VIEW



SIDE VIEW



END VIEW



INSTALLATION REQUIREMENTS

1. Top section of vault shall be no lower than 6 inches above grade.
2. All vault will be constructed with a drainage system of approved pipe material to drain water that may penetrate the vault. The piping shall originate at the lowest point inside the vault and routed to daylight in a manner to promote drainage.
3. If vault is located near a traveled way, WMED may require a protective structure to prevent damage.
4. Seal all knockouts after conduit is placed.
5. Concrete shall have a compression strength of 5000 P.S.I. after 28 days when tested in accordance with the latest edition of ASTM C-39-72.

PAD AND COVER REQUIREMENTS

FOR SINGLE PHASE TRANSFORMERS
USE PAD U6-5A WITH SOLID 4' x 4' COVER



**Wolfeboro Municipal
Electric Department**
569-8157

**VAULT ASSEMBLY
MULTIPLE SERVICES AND
SINGLE PHASE TRANSFORMERS**

VAULT

U5-5