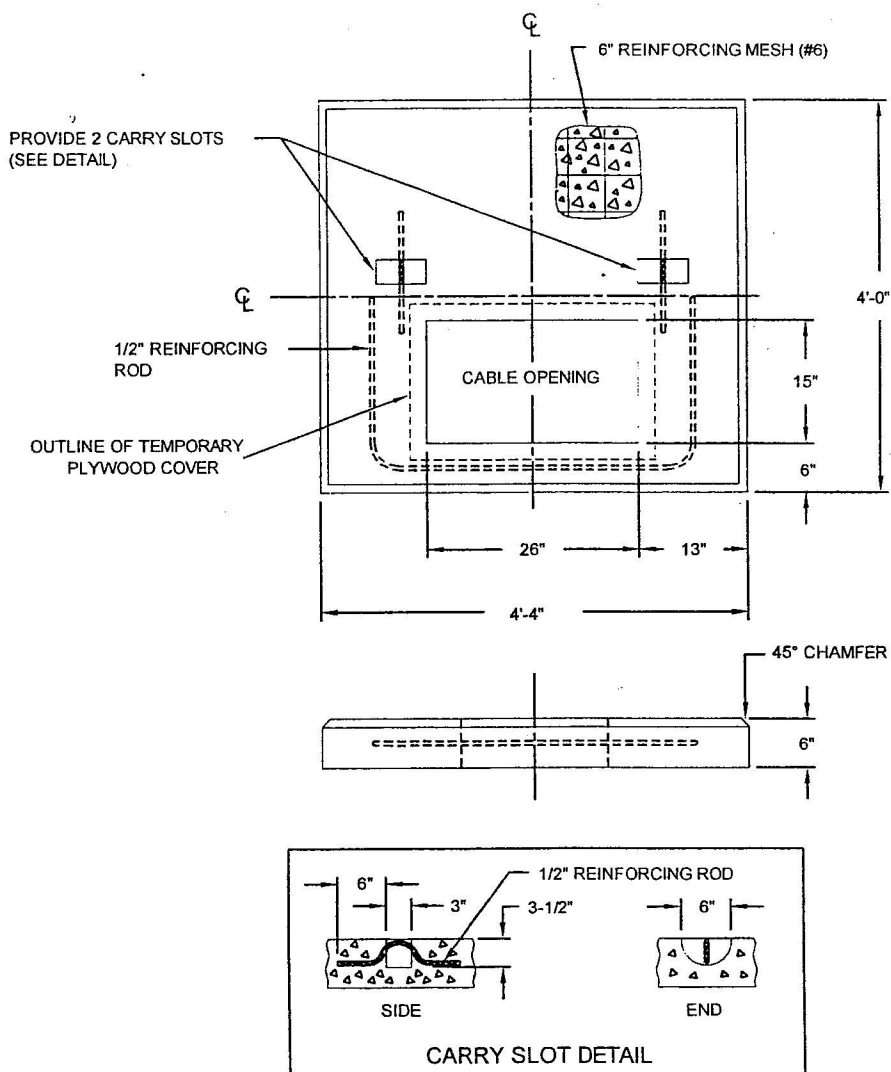
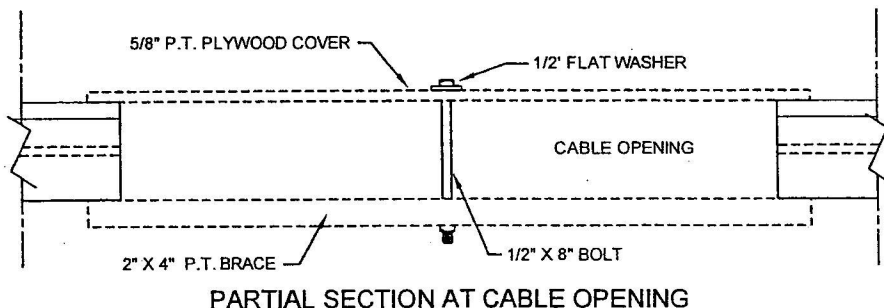


# VAULT CONSTRUCTION - UNDERGROUND



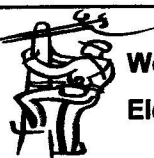
## NOTE:

- 1.) CONCRETE SHALL HAVE A COMPRESSIVE STRENGTH OF 5000 P.S.I. AFTER 28 DAYS WHEN TESTED IN ACCORDANCE WITH ASTM C 39-72 (LATEST EDITION).
- 2.) USE WITH VAULT U6-5B.
- 3.) CONTRACTOR SHALL SUPPLY MEANS TO SECURE CABLE OPENING FROM ENTRY.
- 4.) TEMPORARY COVER AT CABLE OPENING MAY BE USED WITH OTHER COVERS AND PADS AS REQUIRED.



VAULT PAD

**U6-5A**



**Wolfeboro Municipal  
Electric Department**

569-8157

**SINGLE PHASE TRANSFORMER  
VAULT PAD FOR U5-5 & U5-4  
INCLUDING TEMPORARY CABLE OPENING COVER**