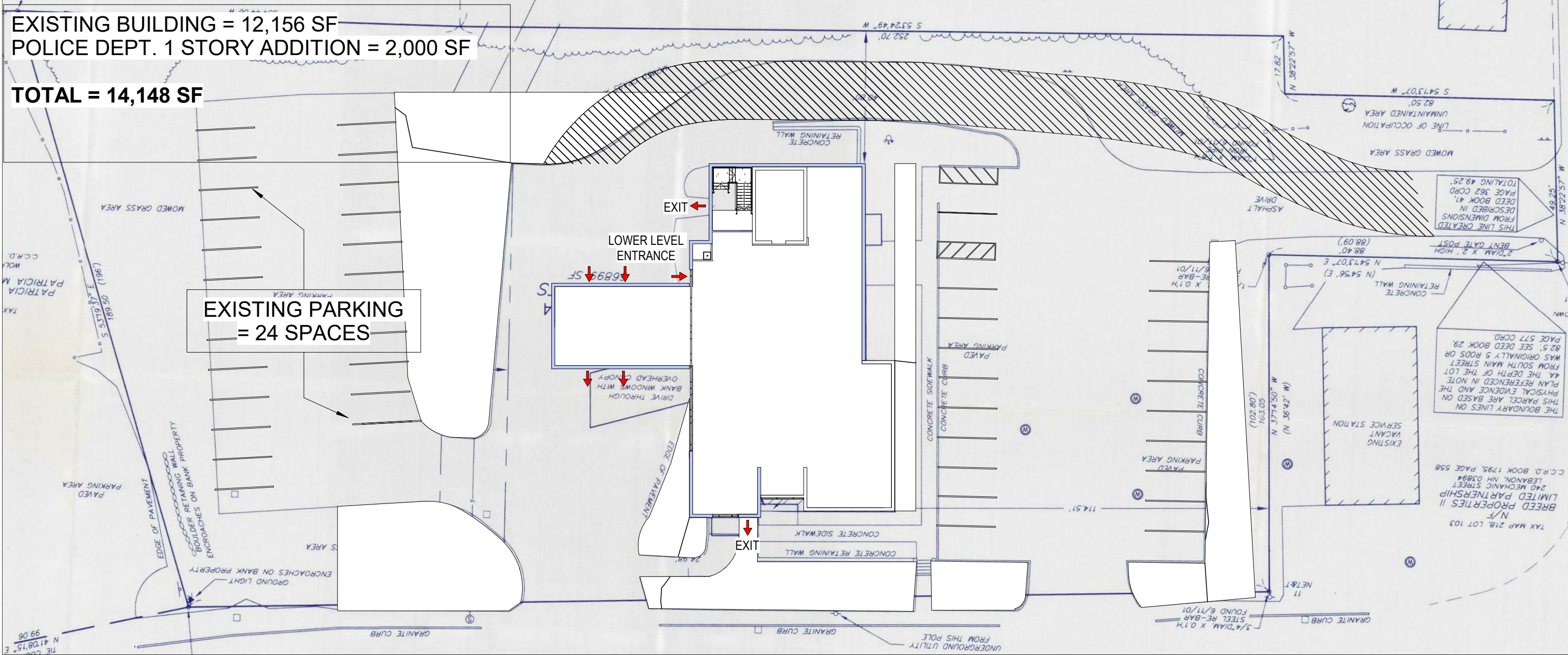


EXISTING BUILDING = 12,156 SF  
POLICE DEPT. 1 STORY ADDITION = 2,000 SF

TOTAL = 14,148 SF

EXISTING PARKING  
= 24 SPACES

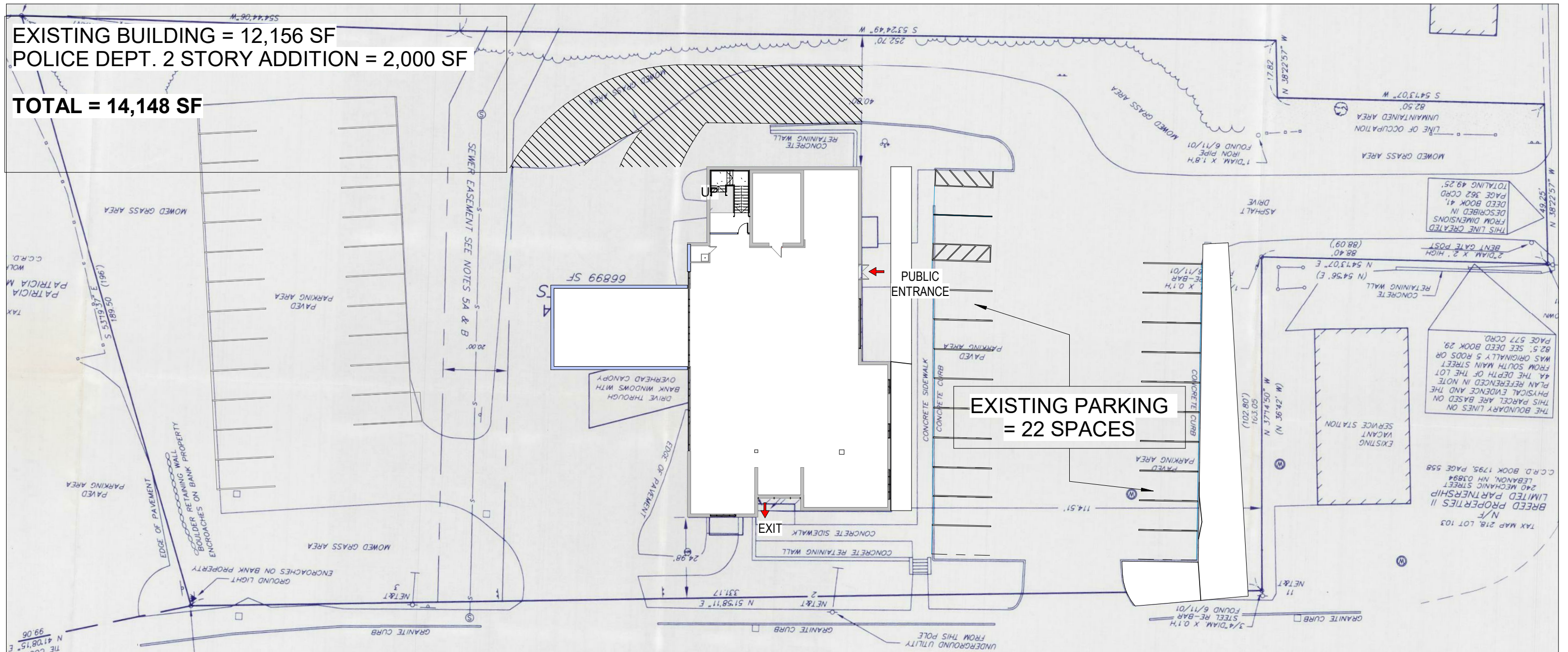


NOTES:  
ADDITION INCREASED FROM 1,500 SF TO 2,000 SF TO ACCOMODATE CURRENT PROGRAM NEEDS  
CONSIDERATION FOR POTENTIAL COLUMNS/STRUCTURES WAS TAKEN  
EFFICIENCY FACTOR IS 20%





**TOTAL = 14,148 SF**



## PUBLIC SAFETY BUILDING

 $\mathbb{Z}$  

LAVALLEE | BRENSINGER ARCHITECTS

UPPER LEVEL SITE PLAN

GROSS FOOTPRINT: 7,074 SF  
NET AREA: 6,515 SF

