

Spring/Summer/Early Fall 2024



Director: Christine Collins
parksdirector@wolfeboronh.us

Assistant Director: Beau Betz
parksassistantdirector@wolfeboronh.us

Program Coordinator: Lexey Austin
programmer@wolfeboronh.us

Administrative Assistant: Tucker Gosselin
parkssadminassistant@wolfeboronh.us



GENERAL INFORMATION

PARKS AND RECREATION OFFICES AT THE POP WHALEN ICE & ARTS CENTER

Telephone: 569-5639

Location: 390 Pine Hill Road

Registration Office Hours:
Mon. - Fri. 8:00 AM - 4:00 PM

Department staff is often out of the office at meetings, running programs or overseeing projects. Please call ahead to confirm that staff is available.

REGISTRATION INFORMATION

1: Registration will be accepted by:

ONLINE at www.wolfeboronh.us/parks-recreation on Parks and Recreation Department page.

MAIL– Wolfeboro Parks & Recreation, PO Box 629, Wolfeboro, NH 03894

DROP-OFF– Wolfeboro Town Hall, Parks and Rec. Office, Drop Box at Townhall, or Drop box located in parking lot of Pop Whalen Ice & Arts Center.

2: If signing up with paper registration form, please use the registration form from the recreation office or download one from the website. When completing the form you must provide all the information requested. Forms that are NOT filled out completely will be returned and NOT processed. The information on the form is imperative for processing.

3: Checks should be made payable to "Wolfeboro Parks and Recreation," unless otherwise noted.

4: We request that you **register for activities at least two weeks prior to the program start date**, unless otherwise noted. Don't let a good program fail - please register early!

5: Residents of Wolfeboro, Tuftonboro and Brookfield qualify for resident rates, and will be given a two week preferred registration window beginning April 1 at 9:00AM before non-residents are allowed to register April 15. After the two week registration window, registrations are processed on a first come, first served basis.

LIKE US ON



CANCELLATIONS

Wolfeboro Parks & Recreation reserves the right to alter the schedule, add or cancel programs, events or activities due to low enrollment or for any other reason.

REFUNDS

Some programs and all fundraisers are not eligible for refunds.
\$10 Fee within two weeks of start date

No REFUND within one week of start date.

All REFUND Requests must be put in writing and sent to parksadminassistant@wolfeboronh.us.

RETURNED CHECK FEE

Any checks that are returned will be assessed with a fee. All fees and balances must be paid with cash or credit card before registration is considered complete.

LOST AND FOUND

Will be held at 390 Pine Hill Road, for two weeks. After two weeks, items will be donated to charity.

FINANCIAL ASSISTANCE

Payment Plans available upon request at the Parks & Recreation Office. A down payment of 25% is required, the remaining balance will be calculated and split up into weekly payments until balance is paid in full.

Payment Plans that are not paid in full 2 weeks prior to the start of the program will be automatically withdrawn, and money will be forfeited. Some programs may have more specific deadlines.

INCLUSIVE SERVICES

To request reasonable accommodation for a parks and recreation program/activity, please contact the office at 569-5639 or parksdirector@wolfeboronh.us.

PHOTOGRAPHS

On occasion, our staff may photograph or videotape participants in department programs. These photos are for our use only and may be used in publications, brochures, pamphlets, flyers, or electronic media. If you have any questions or concerns, please contact the Wolfeboro Parks & Rec. Dept.

SEVERE WEATHER POLICY

All programs will be held as scheduled if it is not raining/storming at the scheduled starting time. If the weather has caused a cancellation or a delay:

1. We will email participants.
2. The schools will be called.
3. Our website will have the cancellation or delay posted at www.wolfeboronh.us/parks-recreation.
4. Our Facebook page will be updated.

AGE REQUIREMENTS

For all youth programs, age requirements will be as of the first date of the first class, unless otherwise specified. All age requirements are in place to benefit the children and make the experience more consistent for them and the instructor.

MOST UP TO DATE PROGRAM INFORMATION IS ONLINE!

www.wolfeboronh.us/parks-recreation



ABENAKI-SEWALL WOODS BIKE PATHS Network of biking and walking paths that stretch from Abenaki Ski Area to Downtown Wolfeboro & then on to the Sewall Woods Conservation Area. The paths are crushed stone dust and are easily passable on bikes, walking, wheelchairs--even a tricycle!



BEAN PARK This "pocket park" in downtown Wolfeboro is a great place to stop and have a picnic, eat some ice cream, take a rest from your bike ride along the Bridge Falls Path, or just sit and enjoy the views of Back Bay. This park was gifted to the Town in 2011 from the Bean Family, with assistance from the Wolfeboro Conservation Commission and the Wolfeboro-Tuftsboro Land Bank.



BRIDGE FALLS PATH Come enjoy this ½ mile multi-use trail that connects to a regional network of multi-use trails. The Bridge Falls Path provides a scenic walk, run or bike along the shores of Back Bay in between the Railroad Depot downtown to Wolfeboro Falls. After Crossing Route 28, it becomes the Cotton Valley Trail and continues on towards Albee Beach, Wakefield and beyond.



CATE PARK A delightful waterfront park in downtown Wolfeboro that is home to summer concerts, art shows and special events. Located adjacent to the Town Docks on Main St.



CLARK PARK Clark Park is a tranquil oasis of green in downtown Wolfeboro, that offers an open field, shady areas, picnic tables and gardens. Also located at Clark Park is the Clark House Museum Complex, managed by the Wolfeboro Historical Society www.wolfeborohistoricalsociety.org. Located at 233 South Main St. across from Huggins Hospital.



COTTON VALLEY TRAIL The Cotton Valley Trail connects with the Bridge Falls Path to provide multi-use rail trail access through Wolfeboro, along the shores of Crescent Lake and Lake Wentworth and onwards to Wakefield and beyond. Managed by the Cotton Valley Trail Committee (CVTC), the Cotton Valley Trail. Access points at Albee Beach, Mast Landing, Fernald Crossing and from the Bridge Falls Path.



FOSS FIELD Adjacent to Back Bay, and the Bridge Falls Path it is a Multi-use Recreation area in downtown Wolfeboro. Come enjoy lit tennis courts, soccer fields, baseball diamond, basketball courts and the Sue Glenn Playground. Pavilion built in 2018 with public bathrooms.



FRONT BAY PARK Located on Bay St. along the shores of Front Bay (also known as Back Bay), Front Bay Park has a network of walking paths, great views of the bay and downtown Wolfeboro, a picnic gazebo, kayak/canoe access and parking.



MCKINNEY PARK Located at the end of Clark Road. Waterfront point offering views of Wolfeboro Bay and Islands as well as deep-water swimming. No Commerical Scuba diving.

FACILITIES - PARKS



POP WHALEN ICE AND ARTS CENTER Newly renovated in 2022, this year round facility is available to rent to private groups, community organizations, schools and individuals for practices, games, private functions and more! The arena is home to many hockey leagues from October to April.



SEWALL WOODS CONSERVATION AREA Extensive walking, running and XC Ski trails in close proximity to downtown Wolfeboro. This property is owned by the Lakes Region Conservation Trust. Features miles of trails and a peaceful woodland setting. Located on Clow St. near Pleasant St.



WOLFEBORO SKATE PARK
Located at the "The Nick" Recreation Park on Rte. 28. Apparatus is in place year round.

BEACHES



ALLEN ALBEE BEACH

Hours: Dawn til Dusk
Location: Route 28N, across from the Nick
Beautiful sandy beach on Lake Wentworth. Shallow swimming area suitable for younger swimmers and lap swimmers. Grill available for picnics and outings on a first come first served basis. NO PETS ALLOWED. NO BUS GROUPS. RESIDENT PARKING ONLY.



BREWSTER BEACH

Hours: Dawn til Dusk
Location: Clark Road
Sandy beach on Wolfeboro Bay of Lake Winnepesaukee. An active beach with swim lessons and team programs. Swim team docks available for swimming laps when practices are not in session. No inflatable rafts or non-Coast Guard approved swimming aids allowed. NO PETS. NO BUS GROUPS.



CARRY BEACH

Hours: Dawn til Dusk
Location: Forest Road
A gradual slope from the beach provides a shallow swim area for younger children in Lake Winnepesaukee. Site of the Granite Man Triathlon on Saturday, August 20. NO PETS. NO BUS GROUPS. RESIDENT PARKING ONLY.
Wednesdays- July 3- August 21- Day Camp is at Carry Beach from 8AM-4PM.

SUE GLENN PLAYGROUND

Location: Foss Field/ Off Lehner St., Wolfeboro
Open to the public dawn til dusk.



RAILROAD STATION PLAYGROUND

Location: Railroad Ave. Wolfeboro Falls
Open to the public dawn til dusk.



TENNIS & PICKLE BALL COURTS

FOSS FIELD

Location: Foss Field Recreation Area
(4 Tennis courts and 2 Pickle Ball courts)
Enter from Glendon St.
Lit Courts: June 3 - October 28 Nightly until 10:00 PM

THE LIBBY MUSEUM

Telephone: 569-1035

Location: 755 North Main St. Wolfeboro

Hours: Open Seasonally from June through mid September

Tue - Sat: 10:00 AM - 4:00 PM • Sun: 12:00 PM - 4:00 PM

director@thelibbymuseum.org

www.thelibbymuseum.org

THE CLARK MUSEUM COMPLEX

Telephone: 569-4997

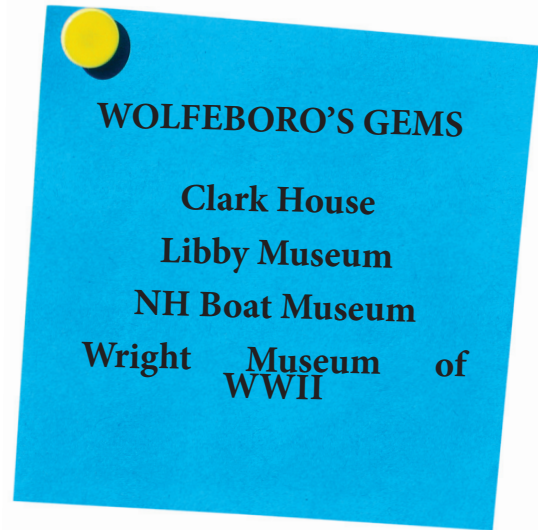
Location: South Main Street across from Huggins Hospital

Hours: July and August

Wed. - Fri. 10:00 AM - 4:00 PM Sat. 10 AM - 2 PM

Tours by Appointment in Spring and Fall.

Wolfeboro Historical Society operates this facility.



WRIGHT MUSEUM OF WORLD WAR II

Telephone: 569-1212

Location: 77 Center Street

NH BOAT MUSEUM

Telephone: 569-4554

Location: 399 Center Street

VISITORS INFORMATION

PUBLIC BATHROOMS:

TIME: Open 7:00am until 9:00pm in the summer and 7:00am until 5:00pm in the winter.

LOCATIONS: ***Chamber of Commerce** building on Railroad Avenue (in back).

***Dockside** bathrooms are open May through mid-October.

***Foss Field Pavilion** bathrooms are open May through mid-October.



PUBLIC BOAT LAUNCH & BOAT TRAILER PARKING

LOCATIONS:

***Dockside**- boat trailer parking at Glendon Street parking lot.

***Libby Museum**-boat trailer parking in Museum parking lot.

***Back Bay** on Railroad Avenue by the Chamber of Commerce building-launching for smaller boats is available provided the boat fits under the bridge if going out to Lake Winnepesaukee- boat trailer parking on Glendon Street.

***Mast Landing** on Center Street- parking for Lake Wentworth Island and allows boat trailers.



LAKES REGION HOUSEHOLD HAZARDOUS PRODUCT FACILITY

PO Box 629
404 Beach Pond Road
Wolfeboro, NH 03894-0629

603-651-7530

Wolfeboro LRHHPF Facility: 3rd Saturday, May thru October, 8:30-noon

Alton Transfer Station, 74 Hurd Hill Rd, 2nd Saturday, July & September, 8:30-noon

Member towns of Alton & Wolfeboro: obtain FREE pass prior to collection day at the Town Solid Waste Facility. Please bring pass to collection. Non-member households: \$50/0-5 gal minimum increment, **cash or check accepted.**

THE NICHOLAS J. PERNOKAS RECREATION PARK (THE NICK)

10 Trotting Track Road
www.thenick.org



HIDEAWAY CIRCUS

July 9th, 10th, and 11th
www.hideawaycircus.com

TRI-TECK EVENTS 3RD ANNUAL TRIATHLON

Saturday, July 27th
www.triteckevents.com

WOLFEBORO AREA CHILDREN'S CENTER ANNUAL TOUCH-A-TRUCK EVENT

Sunday, September 15th
www.thechildrenscenternh.org

THE NICK YOUTH ASSISTANCE SCHOLARSHIP PROGRAM (YAP)

As a 501(c)(3) non-profit organization, The Nick is committed to providing recreational space and opportunities throughout the Lakes Region of New Hampshire.

The Youth Assistance Scholarship Program, "YAP" was created to ensure that all children have an equal opportunity to play team sports at The Nick, regardless of financial circumstances.

30–50 scholarships will be awarded to qualifying families this year. The Nick encourages all families in need of financial assistance to apply. Scholarships will be distributed on a first-come-first-served basis.

Community support, awareness, and involvement are essential for the success of YAP. The Nick extends its gratitude to everyone who made a financial contribution to the program, and also to the Governor Wentworth Regional School District and youth leagues for their partnership in spreading awareness of YAP.

KINGSWOOD YOUTH CENTER

KINGSWOOD YOUTH CENTER

Afterschool and summer programs at the Kingswood Youth Center (KYC)! The KYC offers a daily afterschool program and will offer a full schedule of free programs for high school and middle school students during summer 2024. The summer program schedule will be available after June 1. All programs are free, fun, and include a hot meal! Please contact (603) 569-5949 or info@thekyc.org to inquire and/or check out the schedule at <http://thekyc.org/summer-programs/> following June 1.



The Kingswood Youth Center's mission is to provide a safe and positive environment in which youth may grow, learn and develop important life skills critical to their success in the adult world. The KYC offers after-school programs to seventh through twelfth-grade students, in the Governor Wentworth Regional School District. In addition to the after-school program, the KYC offers weekly BTAS! (beyond the after-school) programs that are hosted in the evening, on weekends, and during school vacations. A complete schedule of full-day and half-day programs is available during the summer months. All programs and activities are free and include a hot meal. Cooking classes, arts and crafts, computers, woodworking, games, team-building and leadership activities, life-skills exploration, gardening, field trips, and outdoor recreation exemplify some of the activities offered. In partnership with White Horse Recovery, substance misuse prevention education services are incorporated into the KYC's programs. Field trips include visits to local farms, museums, beaches, mountains, lakes and natural places, as well as, the Lakes Region Humane Society, Camp Sentinel, Pop Whalen, The Nick, and downtown Wolfeboro. The KYC Kuboard is the KYC's own food pantry where fresh, frozen, and pantry items are available to families. The KYC also offers an individual mentoring program called Club 121 (one-to-one mentoring). Through Club 121, students are connected with an adult mentor from the KYC, who helps to facilitate the exploration of short-term and long-term goals. For more information check us out at www.thekyc.org, call (603) 569-5949, or email info@thekyc.org.



Check out free programs offered by Wentworth Watershed Association at wentworthwatershed.org. Programs are being added and changed to account for participant safety. Outdoor activities and virtual events are offered. <https://wentworthwatershed.org/>



(THE NICK) 16 TROTTER TRACK ROAD
THURSDAYS 12:00-3:30
MAY 16 - OCTOBER 17
WWW.WOLFEBOROFARMERSMARKET.COM



**A REMINDER TO
 WOLFEBORO RESIDENTS
 SAVE THE DATES:
 SEPTEMBER 10, 2024
 STATE PRIMARY ELECTION
 AND NOVEMBER 5, 2024
 GENERAL ELECTION.**

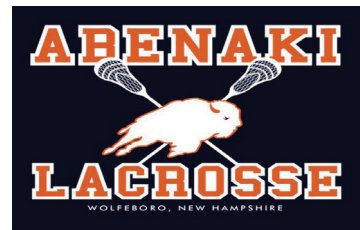


SPRING SPORTS



Kingswood Babe Ruth / Cal Ripken Softball and Baseball
 We love the sounds of athletes laughing, encouraging their teammates, and celebrating personal and team successes on the ballfields. It is our mission to continue to develop and provide the best possible youth baseball/softball program for the greater Kingswood area.

Cal Ripken T-Ball (ages 4-6) registration closes April 5, 2024
 Junior Babe Ruth baseball (ages 13-16) registration closes May 1, 2024.
 Cal Ripken 10u and 12u tournament teams play into July. Junior Babe Ruth baseball runs from late May through July.
 Announcing fall baseball beginning in 2024! Visit our website for updates and follow us on Facebook.
 All league information is available at www.kcrbl.com.



Abenaki Lacrosse: Ages 6-14
www.abenakilacrosse.com



High Tide Lacrosse Camps: PreK- 12th grade
www.Coastalax.com



259 South Main Street
Wolfeboro NH 03894
603-569-2428
www.wolfeborolibrary.org

HOURS

Monday-Wednesday. 9:30am - 7pm
Thursday & Friday 9:30am - 5pm
Saturday 9:30am - 3pm

ONGOING PROGRAMS

Cribbage Mondays
Second Monday Coffee and Donuts
Second Tuesday Book Discussion
Tech Tuesdays
Wednesday Drop-in Knitting Group
Wednesday One-on-One Genealogy Help
First Friday Scrabble
Fourth Friday Films
It's A Mystery Book Chats
Monthly Cornerstone VNA Caregiver Cafes
Weekly Storytimes for Toddlers & Preschoolers
Monthly Art Class for Ages 7 up
Teen Advisory Group

SPECIAL CHILDRENS' EVENTS

Weekly Farmer's Market Storytime Jun - Aug
Summer Reading Program June 24 - Aug 9
GooseChase Scavenger Hunt July 1 - 15

PLEASE VISIT OUR WEBSITE FOR A COMPLETE LISTING OF PROGRAMS AND EVENTS FOR CHILDREN, ADULTS AND FAMILIES. WE HOPE YOU'LL VISIT US SOON!



WHAT WE OFFER

Free Library Cards for property owners, year-round residents, GWRSD students, & staff
Free Use of Meeting Rooms
Free Wi-fi and public computer access
Printing, copying, and scanning services
Borrow books, movies, magazines, ebooks, audiobooks, Orion telescope, museum & attraction passes
Free recycled books & jigsaw puzzles
Ongoing programs and special events for children & adults
Children's Area with toys, games, computers and comfortable family seating
Comfortable adult seating and quiet work spaces



Wolfeboro Parks & Rec.

VENDORS WANTED

SUMMER KICK OFF | FALL FESTIVAL

JUNE 22ND & SEPT. 28TH

Find our vendor application on our website.

WWW.WOLFEBORONH.US/PARKS-RECREATION



SENIOR PROGRAMS



EVENTS | LUNCHES | PROGRAMS

As senior lunches have seen an increase in the number of attendees, the decision was made to move over to the Great Hall in the Wolfeboro Town Hall.

Upcoming Senior Lunch Dates:

Monday, April 8th	Monday, Sept. 16th
Monday, May 13th	Monday, Oct. 21st
Monday, June 10th	Monday, Nov. 4th
Monday, July 8th	Monday, Dec. 16th
Monday, Aug. 12th	

Stay tuned for more program information coming up for Mah Jong classes, senior bingo, walking club, and details on this year's National Senior Health & Fitness Day on May 29!



Join us every Tuesday and Thursday at the Wolfeboro Community Center (32 Lehnner St.) for Coffee & Conversation! Games, coffee, & fun times are provided. VNA Foot Clinics will be 3rd Wednesday of every month at the Community Center.

SHADES OF IRELAND TRIP



Sign ups for the Shades of Ireland Trip are underway! For more information on pricing, trip details, to view the itinerary & to register, check out the link below!

Shades of Ireland Trip Dates: Oct. 23rd-Nov. 1st
<https://gateway.gocollette.com/link/1208445>

Deadline to sign up is April 17th, 2024. After that, bookings are based on availability & rates are subject to change.



SENIOR CLUB INFORMATION



Interested in joining the Wolfeboro Senior Citizen's Club? Contact Amy Capone-Muccio by phone or email for more information and to see what it's all about!

Amy Capone-Muccio:
 Phone: 603-569-8161
 Email: welfaredirector@wolfeboronh.us

Check out our website, Facebook page, or call the office at 603-569-5639, for the most up to date information on all senior programming!

MAHJONGG

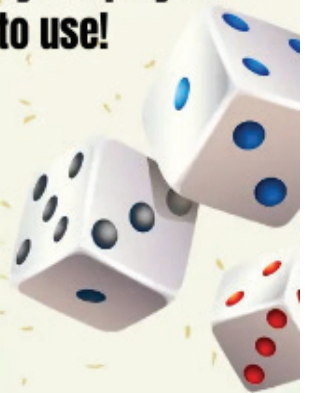
Mondays - 4/29, 5/6, 5/13, 5/20

@ Abenaki Lodge (390 Pine Hill Rd.)

10am-12pm **PARTICIPANTS MUST PRE
REGISTER BY APRIL 24**

**Learn to play MahJongg in a small group setting with Mindy. All players
need a card. Feel free to bring your own game set to use!**

**COST FOR LEARN TO PLAY:
\$30 if you have a card
\$45 if you need a card**



**REGISTER EARLY,
SPACE IS LIMITED!**



**Register on Rec Desk:
<https://wolfeboro.recdesk.com/Community/Program>
or Call 603-569-5639 if you have any questions**



Senior Walking Wednesdays!

@ The Nick



Join us at The Nick on Wednesdays beginning on Wednesday, May 1st from 10:00am-11:30am for a senior walking club! Bring your sneakers, plenty of water and be prepared to exercise!

Benefits of Walking:

- ✓ Strengthens muscles
- ✓ Controls cholesterol levels
- ✓ Regulates blood pressure
- ✓ Reduces stress
- ✓ Delays aging
- ✓ Boosts immunity
- ✓ Improves heart health
- ✓ Burns fat

FREE
Program!

Pre-Registration is **NOT** required.



WOLFEBORO ARBOR DAY CELEBRATION

DATE: Friday, May 3

TIME: 10:00 AM

LOCATION: Foss Field

Come celebrate Arbor Day in Wolfeboro! The staff of the Parks and Rec Department, along with local school children and our Tree Warden Kirk Titus will be holding an Arbor Day Celebration. After a short ceremony, we will be splitting into groups and planting trees at designated locations. Come with work clothes, gloves and a spirit of service. The Town of Wolfeboro has been a Tree City USA for the past 41 consecutive years.

WOLFEBORO BIKE AND WALK DAY

DATE: Friday, May 10

TIME: Breakfast Celebration 7:00AM to 9:00AM

LOCATION: Main Street by Huggins Hospital & Cate Park
Celebrate National Bike and Walk day by joining your fellow citizens in walking and biking to work or school! This program is cohosted by Huggins Hospital and Wolfeboro Parks and Recreation. Join other bikers and walkers for a snack and sticker at Cate Park and Huggins Hospital in downtown Wolfeboro.

Register your company or school to compete in the Bike and Walk Day Contest (www.wolfeboronh.us/parks-recreation).



15TH ANNUAL STACEY BURNS 5K RUN/WALK

DATE: Saturday, May 11

TIME: 9:00AM Walkers/ 9:15AM Runners

LOCATION: Carpenter School

PRE-REGISTRATION: Register online at www.wolfeboronh.us/parks-recreation.

Day of Registration: 8:00AM at event.

Adults \$25.00 12 and under \$20.00

SPRING SOCCER

AGES: K-1/Grade 2/3

DATE: April 30 - May 28 - Tuesdays

LOCATION: The Nick

FEE: \$35 Resident/ \$40 Non-Resident

SCHEDULE: Tuesdays 4:30PM-5:30PM

Boys and girls are invited to participate in this non-competitive program where FUN is the focus. The Kingswood Varsity Soccer Team will be assisting. Register online at www.wolfeboronh.us/parks-recreation.

GRANITE STATE TRACK AND FIELD

AGES: 9-14 years old by December 31, 2024

PRACTICES: Thursdays —May 16-June 15, 2024

TIME: 4:30 PM-5:30 PM

LOCATION: "The Nick"

FEE: \$70 Resident/ \$90 Non-Resident

A program of NHRPA. This is a program where kids challenge their potential and explore track and field sports while running, jumping and throwing. We will have practice meets to help prepare for the district meet.

MEET DATES: May 30- Wolfeboro, June 15- Winnisquam, Tilton- Regional/State Meet.

Wolfeboro Lions Club

The Great Smith River Canoe and Kayak Race



\$30 per paddler

the first 50 participants registered will receive a free t-shirt.

Prizes will be awarded to the first three finishers in each class.

Sat. May 18, 2024

Albee Beach, Wolfeboro

(Albee Beach Rd. Off Rte. 28)

Registration Begins at 10 am

Race Starts at 1:15 pm



Scan Me

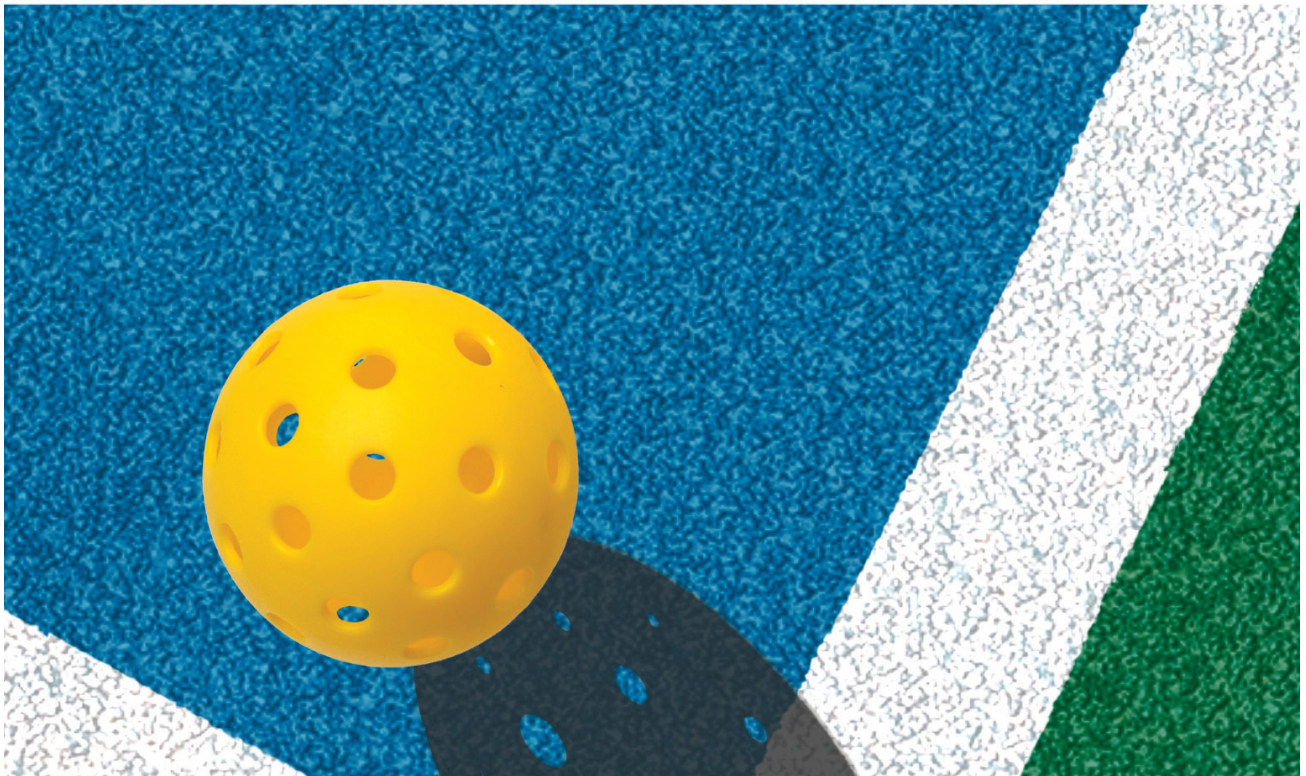
Registration Forms at Wolfeboro Chamber Office, 32 Central Ave. or call 603.569.4697 | Register online

Drop-In Pickleball

@ Pop Whalen, 390 Pine Hill Rd.

CHECK OUT OUR CALENDAR
FOR DATES AND TIMES!

[https://wolfeboro.recdesk.com
/Community/Calendar](https://wolfeboro.recdesk.com/Community/Calendar)



\$6 drop-in fee
or \$46 for a
monthly pass

Can be purchased on rec desk or
in the Parks & Rec office at Pop Whalen





Wolfeboro Parks & Rec.



SAFE SITTER COURSE

This course will prepare 11 to 14 year olds with the life and safety skills they need to be safe while home alone, watching younger siblings or babysitting.



**SATURDAY
20TH
APRIL
9-2:30**

**@ ABENAKI
LODGE
390 PINE HILL
RD.**

**BRING
PACKED
LUNCH,
SNACKS &
WATER**

**COST:
\$65**

Students will receive the Safe Sitter Certification Card upon completion of the course.

REGISTER NOW!

<https://wolfeboro.recdesk.com/Community/Program>



COURSE CONTENT

- ✓ **Safety Skills:** Students learn how to prevent unsafe situations & what to do when faced with dangers such as power failures or weather emergencies.
- ✓ **Child Care Skills:** Students learn tips to manage behavior that will help them stay in control of themselves & the children in their care. Students also learn the ages & stages of development & diapering practice.
- ✓ **First Aid & Rescue Skills:** Learning skills such as choking rescue is often students' favorite part of the class. They will also learn to assess and respond to injuries & illnesses.
- ✓ **Life & Business Skills:** The ability to screen jobs, discuss fees, & greet employers will set students up for success now and in the future. They will practice these skills through various role play exercises.

Wolfeboro Parks & Recreation presents...

Shades of Ireland

with Optional 3-Night London Pre Tour Extension

with Optional 3-Night Edinburgh Post Tour Extension

October 23 – November 1, 2024



Book Now
& Save

\$150
Per Person

Book Now & Save \$150 Per Person:

Double ~~\$3,979~~; **Double \$3,829**•

Single ~~\$4,479~~; **Single \$4,329**;

Triple ~~\$3,949~~ **Triple \$3,799**

For bookings made after Apr 17, 2024 call for rates.

Included in Price: Round Trip Air from Logan Intl Airport, Air Taxes and Fees/Surcharges, Hotel Transfers

Not included in price: Cancellation Waiver and Insurance of \$449 per person

* All Rates are Per Person and are subject to change, based on air inclusive package from BOS

For more information contact
Lexey Austin-Program Coordinator
Wolfeboro Parks and Recreation
(603)569-5639
programmer@wolfeboronh.us

A photograph of a group of people, mostly seniors, participating in a contra dance. They are in a large hall, some holding hands in a line, others in pairs. The lighting is warm and slightly dim, creating a cozy atmosphere. The text is overlaid on the left side of the image.

Wolfeboro Seniors presents a community Contra Dance

Saturday, April 27th

Great Hall of Wolfeboro
Town Hall, 84 South
Main Street

Dance starts at 7pm

Snacks and drinks will
be available for sale

Get ready to do-si-do and promenade
with a lively group of friends to the
sound of fiddles and calls in this fun
social dance tradition. Music by
Puckerbrush with guest musician
Shana Aisenberg & Calling by Eric
Rollnick

\$ 10 Per person \$ 25 Family pre-register on eventbrite

<https://www.eventbrite.com/e/community-contra-dance-tickets-871050023067>

BEACH PASSES

Available after May 1st!

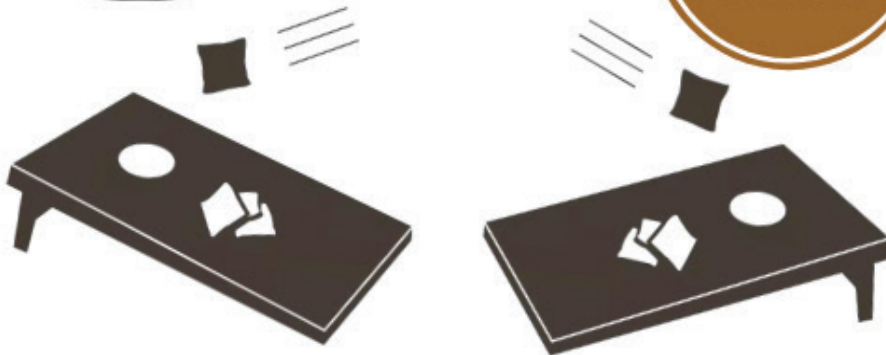
CAN BE PICKED UP AT THE PARKS AND REC OFFICE
LOCATED AT POP WHALEN ICE ARENA (390 PINE HILL
ROAD). CALL FOR HOURS 603-569-5639.

BEACH PASSES ARE REQUIRED FOR PARKING AT
CARRY & ALBEE BEACH.



Spring CoRNHoLE LEAGUE

Register on Rec Desk!



Thursday Nights | May 2nd - June 27th

6:00pm - 8:30pm

Foss Field Pavilion | 88 Lehner St. Wolfeboro, NH

<https://wolfeboro.recdesk.com/Community/Program>

STACEY BURNS

15th Annual Memorial Scholarship

5K RUN/WALK

12 and
under \$15
13 and up
\$25



S A T U R D A Y

MAY 11TH, 2024

RACE DAY CHECK IN 8:30AM
WALKERS START AT 9AM
RUNNERS START AT 9:15AM

CARPENTER SCHOOL

102 S MAIN ST, WOLFEBORO, NH

MEDALS FOR 1ST, 2ND, AND 3RD IN EACH AGE CATEGORY!



FOR INFORMATION & TO REGISTER VISIT
WOLFEBORO.RECDESK.COM/COMMUNITY/PROGRAM

STACEY BURNS MEMORIAL 5K SCHOLARSHIP FUND

Stacey Keane Burns was a loving mother of five children, in Wolfeboro, New Hampshire. Her life came to tragic end on May 10, 2009. Stacey worked as the school nurse at Carpenter School. Stacey had an altruistic spirit and a loving, kind heart. She touched the lives of many people, always willing to lend a hand. Her bubbly, effervescent personality made those around her feel as if they had always been friends. She was loved and is missed by many.

The scholarship award is given to individuals who are pursuing a career in nursing, who do not only show merit and need, but also for those who embody Stacey's giving spirit and kind heart.

DONATE NOW



We love each other!



venmo

CATE PARK COMMUNITY BANDSTAND CONCERT SERIES

DATE: June 29
July 6, 13, 20, 27
August 3, 10, 17, 24, 31— Saturday Evenings

TIME: 7:30 PM

FEE: Free

LOCATION: Cate Park adjacent to the Town Docks
The Friends of the Wolfeboro Community Bandstand, Inc. provide a summer concert series at the Bandstand.

CATE PARK BAND (BYOI-BRING YOUR OWN INSTRUMENT)

DATE: June 26
July 3, 10, 17, 24, 31
August 7, 14, 21, 28 -Wednesday Evenings

TIME: 7:00PM-7:45PM—public rehearsal
8:00PM-8:45PM—concert

FEE: Free

LOCATION: Cate Park adjacent to the Town Docks.
The Cate Park Band rehearses and performs at the Bandstand.

JUNIOR GOLF CAMPS: (Ages 8-14)

LOCATION: Kingswood Golf Course

DATE: SESSION 1: June 25-27

SESSION 2: July 1-3 (Mon-Wed)

SESSION 3: July 9-11

SESSION 4: August 6-8

Tuesday, Wednesday and Thursday 9am-11:30am

FEE: \$175

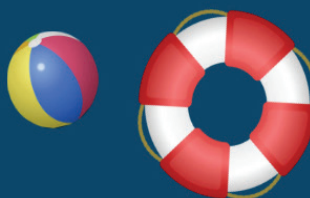
Camps are a great chance for your child to learn how to play golf with lots of fun activities and games. Instruction includes: Full swing, short game, etiquette, and how to play the game. On Wednesday we will have a 3-Hole Tournament along with lunch and prizes. Clubs are provided if you don't have them.



Job Opportunities!

Come work at Wolfeboro Parks and Rec!
We're currently looking for...

- Lifeguards
- Water Safety Instructors
- Beach Attendants/Gate Keepers
- Day Camp Counselors
- Sailing Instructors
- Maintenance
- Cemetery Workers



Volunteer Position: Track & Field Coaches

Go to wolfeboronh.us/parks-recreation for more info



C3Brix

Rebuild your childhood

LEGO CAMP

JUNE 24TH-JUNE 28TH

AGES 6-13

\$220 WEEKLY, \$60 DAILY

@ ABENAKI LODGE, 390 PINE HILL RD.

REGISTER ON REC DESK!

**WOLFEBORO.RECDESK.COM/
COMMUNITY/PROGRAM.**



Wolfeboro Parks & Recreation

PICKLEBALL LEARN TO PLAY

@ POP WHALEN ICE & ARTS CENTER



FIRST SESSION (JUNE 6):

9:00 a.m.–12:00 p.m.

SECOND SESSION (JULY 11):

9:00 a.m.–12:00 p.m.

THIRD SESSION (AUGUST 1):

9:00 a.m.–12:00 p.m.

**INCLUSIVE LEARNING
ENVIRONMENT:**

New to pickleball or thinking of trying it?
This learn to play group is the perfect
opportunity to try it out and learn the
game!

Register on RecDesk:
wolfeboro.recdesk.com/Community/Program

**\$30/
SESSION**





**saturday,
JUNE 22nd** ★

SAVE • THE • DATE

**11AM
-3PM**
@ POP WHALEN
ICE & ARTS
CENTER
**FUN FOR
EVERYONE!**

Join us for our
**SUMMER
KICK OFF!**

**Music,
Games,
Activites,
Raffles,
Food,
Family,
Friends,
& More!**

**CHECK OUT THE CALENDAR AT
POP WHALEN ICE AND ARTS CENTER!**

<https://wolfeboro.recdesk.com/Community/Calendar>

WEBSITES FOR THINGS TO DO IN NH

www.thingstodo.com/states/NH/

www.nhliving.com/fairs/

GREAT WATERS MUSIC FESTIVAL

Check out their website www.greatwaters.org



FREE *4th Annual* **Car Show** *Wolfeboro Lions Club*

Sat., July 6
11 am - 2 pm

A fun, no classes, non-judged show!

The Nick Recreation Park
10 Trotting Track Rd.
(off Rte. 28), Wolfeboro

Donations Welcome
50/50 Raffle
Door Prizes for Participants
Concessions Available

All Vehicles & Motorcycles Welcome



Wolfeboro's 4TH of JULY FESTIVAL

Wednesday, July 3rd, 2024

6PM | MUSIC @ CATE PARK BY CATE PARK BAND

Stop by Cate Park to visit the
American Legion all weekend!

Thursday July 4th, 2024

10AM | ANNUAL FOURTH OF JULY PARADE

6PM | MUSIC @ CATE PARK BY CATE PARK BAND

9:30PM | FIREWORKS @ BREWSTER FIELD

Friday, July 5th, 2024

1PM | ANIMAL ENCOUNTERS SHOW @ GREAT HALL

Saturday, July 6th, 2024

11AM | LION'S CLUB CAR SHOW @ THE NICK

Sunday, July 7th, 2024

1PM | QUILT OF VALOR PRESENTATION @ GREAT HALL

Lots of fun weekend activities: scavenger hunts, museums, music, etc.

Visit our Facebook Page, Wolfeboro 4th of July Festival, for updates

SUMMER TRIATHLONS



31ST ANNUAL GRANITE KID TRIATHLON

DATE: Saturday, July 20

TIME: Starts at 8:00AM, sign in starts at 7:00AM-7:45AM

LOCATION: Brewster Beach

FEE: \$25 Resident/ \$35 Non Resident

\$30 Resident/\$40 Non Resident- Day of (If space available)

AGES: 5 & under, 6-7, 8-9, 10-11, 12-13, 14-16

This race is truly a unique event that focuses on encouragement and achievement and also rewards those participants who put forth great determination and perseverance. Parents, friends and family cheer on the participants as our young racers discover what they are capable of. The day starts out as bodies are marked with the numbers, swim caps and bib numbers are distributed, bikes are placed in their racks, and the excitement that precedes the start begins to build. The first wave of swimmers hits the water and the cheers and words of encouragement continue until every finisher has crossed the line.

The triathlon will begin and finish at Brewster Beach which is located on Clark Road in Wolfeboro. The annual race regularly draws upwards of 100+ young triathletes (many of them first-timers) from throughout New England. The race gets more popular each year, so register early to ensure your space.

The Granite Kid course distances are: swim (variable), bike a 1.2 mile loop, run .8 mile.

Free T-shirt, Enrollment limited. Awards and timing for 6-16 race only! 3-5 year old race will receive a participation ribbon.

Google Map of Course on our website:

<http://www.wolfeforoh.us/parks-recreation/pages/granite-kid-triathlon>



41ST ANNUAL GRANITE MAN TRIATHLON

DATE: Saturday, August 17

TIME: 9:00 AM

LOCATION: Carry Beach

THE COURSE: 3/4 mile swim, 15 mile bike, 4.2 mile run

REGISTRATION: By August 14 or 325 participants

FEE: \$70.00/individual, \$125.00/team

The Granite Man is a short course triathlon that attracts competitors from throughout New England and beyond. The triathlon will begin and finish at Carry Beach which is located on Forest Road in Wolfeboro. The annual race regularly draws upwards of 350 triathletes from throughout New England and as far away as France. The race gets more popular each year, so register early to ensure your spot.

The race starts at beautiful Carry Beach on Forest Road in Wolfeboro and involves a 3/4 mile swim, 15 mile bike ride and a 4.2 mile run. The event is open to individuals and teams, and we welcome first time and experienced racers. Go ahead and challenge yourself by registering and training for this fun event.

This triathlon was established in honor of Albert Dow III, who exemplified unselfish devotion to the service of mankind. Albert Dow III gave the ultimate sacrifice, his life, in the mountain search and rescue of two complete strangers on January 25, 1982. A Scholarship fund was created because of this race and is now self sustaining. All proceeds will go to Parks and Recreation Department.

Google Map of Course on our website:

<http://www.wolfeforoh.us/parks-recreation/pages/granite-man-triathlon>



SUMMER DAY CAMP MEET & GREET

@THE FOSS FIELD PAVILION

JUNE 27TH

5:30PM-6:30PM

This event is a great opportunity to meet the counselors, get camp information, and turn in all your camper forms!



SUMMER DAY CAMP- 6*-8 YEAR OLDS *AGE 6 BY SEPTEMBER 30, 2024 MUST HAVE COMPLETED KINDERGARTEN

DATE: Mon.-Fri.—July 1-August 16

LOCATION: Foss Field (M, T, Th, F), Carry Beach (W)

TIME: 9:00AM-3:30PM (Some trip days return time later)

FEE: \$90 Resident Weekly Rate/\$135 Non-Resident Weekly

Rate (includes T Shirt and field trip fees)

SUMMER DAY CAMP- 9-12 YEAR OLDS

DATE: Mon.-Fri.— July 1-August 16

LOCATION: Foss Field (M, T, Th, F), Carry Beach (W)

TIME: 9:00AM-3:30PM (Some trip days return time later)

FEE: \$90 Resident Weekly Rate/\$135 Non-Resident Weekly

Rate (includes T Shirt and field trip fees)



TRIP SCHEDULE: (GROUP A/GROUP B OR BOTH)

Week 1- July 1– July 3 (No Camp July 4 & 5)

No Trip

Week 2- July 8– July 12-

Funspot

Week 3- July 15- July 19-

Smitty's

Week 4- July 22- July 26-

Squam Lake Science Center

Week 5- July 29- August 2-

Seacoast Science Center/ Odiorne State Park

Week 6-August 5- August 9-

White Lake State Park


Week 7- August 12- August 16-

Cog Railway

Whether you sign up for 6-8 year old program, 9-12 year old program, your campers days will be filled with tons of fun! Supervised by our trained summer staff, attendees take part in different games and activities, all designed to make sure everyone has fun in a safe environment. There will be Carry Beach days once a week along with a weekly field trip. Plenty of games, arts and crafts, special events and activities to make the campers have a summer they will never forget! Activities focus on group interaction through problem-solving games, sports, projects, beach days, and special events. This program is rain or shine and will have an alternate rainy day location.

**ALL DAYCAMP REGISTRATION FORMS, WAIVERS
AND EMERGENCY FORMS MUST BE TURNED IN
BY**

JUNE 28, 2024

Are you...

In 7th-12th grade?
Part of the Gov. Wentworth School District?
Looking for fun things to do this Summer?

< Register on RecDesk!

For more programs & trips...

Check out the Kingswood Youth Center at <http://thekyc.org/>




Wolfeboro Parks & Rec in conjunction with the Kingswood Youth Center present...

Pop Whalen Teen Nights!
Join us on June 28th & August 30th from 6PM-9PM

Teen Trip to Wallis Sands State Park on July 31st @ 10AM

wolfeboro.recdesk.com/Community/Program >

 The Kingswood Youth Center

WE NEED VOLUNTEERS!

Granite Man & Granite Kid Triathlon

GRANITE KID: SATURDAY, JULY 20TH
GRANITE MAN: SATURDAY, AUGUST 17TH



Email programmer@wolfeboronh.us

WE ARE LOOKING FOR PROGRAM INSTRUCTORS!



Do you have a special skill or hobby? Are you looking to give back to the community? Let us know! We are looking for instructors and volunteers to run programs!



Email programmer@wolfeboronh.us

WOLFEBORO MAKE & TAKE PROGRAM

MUST PRE-REGISTER!

WEBSITE WILL BE UPDATED AS INFO. IS AVAILABLE

www.wolfeboronh.us/parks-recreation



Want to help beautify Wolfeboro?

We are looking for people or businesses who can volunteer time to help maintain flower gardens around town.

Contact us at
parksdirector@wolfeboronh.us
or 569-5639

YOUTH SAILING

IMPORTANT NOTE: Partial scholarships are available for youth who qualify. Please contact NHBM for further information.

AGES: 9-15 years old-Must pass a swim test
Previous sailing experience required for intermediate-advanced sessions. On the first day of lessons the children will be tested to make sure they are in the right class.

LOCATION: Albee Beach

MAX ENROLLMENT: 8 per session

FEE: \$150 Resident / \$180 Non-Resident

Taught by US Sailing certified instructors, participants will learn the basics of sailing, boat handling, and knots – all on beautiful Lake Wentworth! Small class sizes allow for students of varying abilities to receive individual instruction. Beginner students use Optimist Sailing Dinghies and move on to Sunfish when they progress to Intermediate. Boats and program support are provided by the NH Boat Museum. Classes are held Mon-Thurs, with Friday as a rain day makeup OR a “free sail” day from 9am to 12noon.

DATE/TIME: Mon.-Thurs. 9:00AM-12:00PM

Beginner Session 1— July 8– July 11

Beginner Session 2— July 22– July 25

Beginner Session 3— August 5– August 8

Intermediate Session 1— July 15– July 18

Intermediate Session 2— July 29- August 1

Intermediate Session 3— August 12 - August 15



SPORT SAILING

AGES: 14-70+ years old. Must have successfully completed Intermediate Youth or Adult Sailing.

LOCATION: Albee Beach

MAX ENROLLMENT: 6 per session

FEE: \$190 Resident/ \$225 Non Resident per session

DATE/TIME: Mon-Thurs 12:30PM-3:30PM

SESSION 1: July 29 - August 1

SESSION 2: August 12- August 15

SESSION 3: August 19- August 22

Sport Sailing is for students who would like to “up their game”. This class is designed to teach “double handed” sailing techniques using Vanguard 15’s. Our US Sailing certified instructor will refresh your knowledge and help you and your crewmate refine your sail trim and boat handling skills. Some racing skills and strategies will also be taught.

ADULT SMALL BOAT SAILING

AGES: 16+ years old. Must pass a swim & basic fitness test.

LOCATION: Albee Beach

MAX ENROLLMENT: 6 per session

FEE: \$170 Resident/ \$205 Non Resident

DATE/TIME: Mon-Thurs 12:30PM-3:30PM

Beginner Session 1— July 8– July 11

Beginner Session 2— July 22– July 25

Beginner Session 3— August 5– August 8

Intermediate Session 1— July 15– July 18

Intermediate Session 2— August 19- August 22

Adult small boat sailing classes are taught using the Sunfish, the most popular one-adult sailboat in the world.

In the Beginner course, you will learn to rig, launch, and sail your own boat. In the Intermediate course, you will refine your sailing skills such that you can smoothly handle all points of sail in most conditions. Offered in partnership with the NH Boat Museum.

ADULT KEELBOAT SAILING

Weekday Classes over Two Weeks

DATE/TIME: 6/11, 6/13, 6/18, 6/20 T & TH

Basic Session 1: 11AM-3PM

Basic Session 2: 3:30PM-7:30PM

DATE/TIME: 7/16, 7/18, 7/23, 7/25 T & TH

Basic Session 3: 11AM-3PM

Advanced Session 1: 3:30PM-7:30PM

Consecutive Day Classes

DATE/TIME: 7/8, 7/9, 7/10, 7/11 M-TH

Basic Session 4: 11AM-3PM

Basic Session 5: 3:30PM-7:30PM

Weekend Classes

DATE/TIME: 7/6, 7/7, 7/13, 7/14

Basic Session 6: 9AM-1PM

DATE/TIME: 8/10, 8/11, 8/17, 8/18

Basic Session 7: 9AM-1PM

IMPORTANT NOTE: Classes will meet for 4 hours on only the best 3 sailing days out of the 4 scheduled days.

AGES: 16+ years old- Must pass a swim test

LOCATION: 19 Mile Bay, Tuftonboro

FEE: \$210 Resident / \$250 Non-Resident

In the Basic Course, students will learn to crew and helm a 22 foot keelboat in light to moderate conditions on Lake Winnepesaukee. There is no prerequisite for the Basic Course. The Basic Course teaches safety, weather, boat rigging and control, lake navigation, and seamanship fundamentals.

The Advanced Course teaches how to optimize a boat’s performance: sail trim and shape, upwind and downwind technique, flying a spinnaker, and more. Anyone who has taken the Basic Course or can demonstrate previous experience may take the Advanced Course. Upon registration, Advanced Course candidates will be contacted about their qualifications.



Seasonal:
399 Center Street
Wolfeboro, NH 03894

Year-round:
30 Whittier Hwy
Moultonborough, NH 03254

For more information visit: NHBM.org



ADULT/FAMILY & YOUTH BOAT BUILDING, July 13-21 - 8:30AM- 3:30PM

In this nine-day session, adults, families, and youth (12-16) can build their own boat. Trained volunteers guide you through the process to successful completion. Choose between a canoe, kayaks, Bevin's Skiff, or Pee Wee runabout (NEW!). Register online. Class is held in Wolfeboro. Financial assistance is available for both youth and families.

NEW ENGLAND VINTAGE BOAT & CAR AUCTION, July 13, - 10AM - 3PM/ PREVIEW DAYS July 11 & 12

Live-stream online, and in-person at the Nick Recreation Park in Wolfeboro. Food and drinks for purchase at the auction in-person at food trucks.

47th ALTON BAY BOAT SHOW, Saturday, August 10 - 9AM - 12PM. This informal, non-judged vintage boat show is held at the Alton Bay town docks as part of the Alton Old Home Day. No advance registration necessary. All "woodies" and classic fiberglass boats welcome on a first-come, first-served basis. Visitors can vote for the 2024 People's Choice Awards. Visit our website for more information.

Visit NHBM.org for up-to-date Information and additional programs located around Lake Winnepesaukee. You can also find us on Facebook and Instagram.



WOLFEBORO AREA CHAMBER OF COMMERCE

WOLFEBORO AREA BROCHURE

[HTTP://VIEWER.ZMAGS.COM/PUBLICATION/ED2A8C6A#/ED2A8C6A/1](http://viewer.zmags.com/publication/ED2A8C6A#/ED2A8C6A/1)

WOLFEBORO AREA EVENTS CALENDAR

[HTTP://WWW.WOLFEBOROCHAMBER.COM/COMPONENT/OPTION,COM_EVENTLIST/ITEMID,62/](http://www.wolfeborochamber.com/component/option,com_eventlist/itemid,62/)

KINGSWOOD ATHLETICS SUMMER CLINICS & CAMPS

BASKETBALL * LACROSSE * SOCCER * FIELD HOCKEY * FOOTBALL * STREET HOCKEY * SOFTBALL

VISIT: WWW.KINGSWOODHSATHLETICS.ORG
FOR MORE INFORMATION!

YOUTH SWIM LESSONS

AGES: 4 years old- 16 years old

DATE: Session 1: July 8- July 18, M-TH
Session 2: July 22- August 1, M-TH
Session 3: August 5- August 15, M-TH

TIME: Block A- 9:30AM-11:20AM
Block B- 11:30AM-12:40PM*
Block C- 12:50PM-2:00PM*

LOCATION: Brewster Beach

FEE: \$45 Resident / \$65 Non-Resident

Classes are 30 minutes in duration and meet four times per week Monday--Thursday for two-week sessions. *Offered during Session 1 and 2 only!

Participants will register for Session and then the time block they want the class. The class will be scheduled in that time frame for a half hour class. Swim evaluations will be offered prior to the swim lessons start date to make sure we have the swimmers in the appropriate level. Swim evaluations will be held on July 2 and July 3 from 10am-12pm. A notification email will be sent to inform you of what time slot your child is in.

For your information, the following is a list of prerequisites for each level. Children must be able to perform the skills consistently and without assistance.

BEGINNER: The beginner program is designed to introduce young swimmers to the water. Parents are required to remain at the beach during the lesson.

LEVEL 1: Water Exploration (Shallow water lesson)
Fully submerge face in water.

Front and back float with support.
Kicking on front and back with support.
Enter and exit the water independently.

LEVEL 2: Primary Skills (Shallow water lesson)
Float on front and back unsupported for 5 seconds
Swim on front 5 yards without assistance
Swim on back 5 yards without assistance

LEVEL 3: Stroke Readiness (shallow and deep water lesson)

Swim the front crawl for 10 yards
Swim the back crawl for 10 yards
Jump into deep water

Bobs in water over the child's head

LEVEL 4: Stroke Development (Deep water lesson)
Deep water bobs. Standing dive from side of pool
Elementary backstroke for 10 yards. Front & back crawl 25 yards (entire length of pool). Breaststroke & Sidestroke kick with kickboard. Tread water for 5 minutes.

LEVEL 5: Stroke Refinement (Deep water lesson)
Front & elementary backstroke 50 yards. Backstroke. Breaststroke & Butterfly 25 yards. Open turns and flip turns. Tuck and ooke surface dive.

LEVEL 6: Advanced (Deep water lesson)
Intro to competitive swimming. Front & Elementary backstroke for 100 yards. Backstroke. Breaststroke & Butterfly for 50 yards. Open turns and flip turns. Competitive starts, dives.

PARENT & INFANT CLASS

AGES: 6 months-3 years old

DATE: Session 1: July 22- August 1, M-TH
Session 2: August 5-August 15, M-TH

TIME: 9:30AM-10:00AM

LOCATION: Brewster Beach

FEE: \$40 Resident / \$55 Non-Resident

A wonderful course to familiarize children between the ages of 6 months and approximately 3 years with feeling comfortable in and around the water. Parents and children will be in the water together under the direction of the instructor to learn simple safety exercises and skills. No skill prerequisites. Child must be at least 6 months old. This is a parent involvement class. Parents must accompany their child to each class and will be in the water with their child.





Wolfeboro Parks & Recreation Summer Employment 24'

WE'RE HIRING!



Scan me to
apply!

We are looking for....

- Beach Attendants
- Lifeguards/Swim Instructors
- Day Camp Director
- Day Camp Head Counselor
- Day Camp Counselors
- Summer Maintenance Cemetery (18+)
- Summer Maintenance Gardner (18+)
- Summer Maintenance (18+)

Perks of the job

- Spend your workday outside while having fun!
- Gain behavioral management experience
- Develop leadership and management skills
- Make friends!

Rates vary depending upon
position & experience, up to
\$20/hour!

Apply today & make this your best summer job yet!

www.wolfeboronh.us/parks-recreation



REGISTER NOW!

To register for the trip & view details:

<https://gateway.gocollette.com/link/1252678>

For more information:

programmer@wolfeboronh.us

Information session details coming soon!

SOCCER SUMMER CAMPS '24

IGNITE THE PASSION

EARLY BIRD SPECIAL

DON'T MISS OUT! SIGN UP FOR CAMP NOW TO SAVE \$

DISCOUNTS UP TO **\$40** ON SOME SESSIONS

+ UNLOCK EXCLUSIVE MERCHANDISE SAVINGS

* EARLY BIRD DISCOUNT EXPIRES 30 DAYS BEFORE CAMP

FOUNDATIONAL SKILLS CAMPS

Players will work on technical foundational skills in a fun and safe environment. More than just a soccer camp; a cultural, educational, and informational program that uses soccer to teach core values of responsibility, integrity, respect, sportsmanship and leadership.

CREATIVE SKILLS

Week-long summer camps which expand upon Challenger's traditional foundational camp curriculum. Help your player or child unlock their creativity this summer!



POWERED BY SPIRE

LOVE THE GAME. LEARN THE GAME.

NORTH AMERICA'S MOST TRUSTED SOCCER CAMP PROVIDER

Wolfeboro Parks & Recreation



FOUNDATIONAL SKILLS CAMPS

THE NICK, 10 Trotting Track Rd, Wolfeboro NH 03894

JUL 24th — JULY 28th

Ages	Time	Early Bird Price
2 - 5	8.00am - 8.45am	\$95-\$115
6 - 14	9.00am - 12.00pm	\$170-\$200
7 - 14	9.00pm - 3.00pm	\$230-\$270

REGISTER NOW

Get in touch regarding these camps

Lexey Austin — 603-569-5639 — programmer@wolfeboronh.us

CREATIVE SKILLS CAMPS

THE NICK, 10 Trotting Track Rd, Wolfeboro NH 03894

AUGUST 26th — AUGUST 30th

Ages	Time	Price
7 - 15	9.00am - 12.00pm	\$155

<https://challengersports.com/external-events/wolfeboro-recreation-week-1/>
<https://challengersports.com/external-events/wolfeboro-recreation/>

CHALLENGERSPORTS.COM

FALL FESTIVAL

SAVE THE DATE

SATURDAY,
SEPTEMBER 28TH
11AM - 3PM

@ The Foss Field Pavilion

Music, Games, Activities, Raffles, Food, Family, Friends, Face Painting, & More!

Fun for the whole family!

JOIN US FOR OUR 8TH
ANNUAL FALL FESTIVAL!



Wolfeboro Parks & Rec.



SAFE SITTER COURSE

This course will prepare 11 to 14 year olds with the life and safety skills they need to be safe while home alone, watching younger siblings or babysitting.



**SATURDAY
5TH
OCTOBER
9-2:30**

**@ ABENAKI
LODGE
390 PINE HILL
RD.**

**BRING
PACKED
LUNCH,
SNACKS &
WATER**

**COST:
\$65**

Students will receive the Safe Sitter Certification Card upon completion of the course.

REGISTER NOW!

<https://wolfeboro.recdesk.com/Community/Program>



COURSE CONTENT

- ✓ **Safety Skills:** Students learn how to prevent unsafe situations & what to do when faced with dangers such as power failures or weather emergencies
- ✓ **Child Care Skills:** Students learn tips to manage behavior that will help them stay in control of themselves & the children in their care. Students also learn the ages & stages of development & diapering practice.
- ✓ **First Aid & Rescue Skills:** Learning skills such as choking rescue is often students' favorite part of the class. They will also learn to assess and respond to injuries & illnesses
- ✓ **Life & Business Skills:** The ability to screen jobs, discuss fees, & greet employers will set students up for success now and in the future. They will practice these skills through various role play exercises.

**The Wolfeboro
Garden Club**

FUNDRAISER

Members of the Garden Club are kept busy year round planning, planting, watering, and weeding our meticulously kept gardens throughout Wolfeboro.

Join us!



Proceeds finance the ten gardens maintained yearly & provide scholarships for area students.

Place your order in Septemeber or October and we'll deliver your wreath to you in November just in time for Thanksgiving to be enjoyed all winter!

wolfeborogardenclub.org

We hope you enjoy the gardens!

2024 Garden Club Wreath Sale

Visit our website to see other civic contributions we support.

Volunteers
needed!
Last Night
Wolfeboro
Tuesday, December 31st

Email
programmer@
wolfeboronh.us



**SAVE THE
DATE**
LAST NIGHT
WOLFEBORO

TUESDAY,
31 DECEMBER 2024



VOLUNTEER COACHES NEEDED

We are currently seeking volunteer coaches for Fall Soccer and Field Hockey. Make a commitment to change a young person's life.

We Need Help With:

- Fall Soccer: ages 6-12
- Field Hockey: ages 9-12

Benefits:

- Bond with your child
- Give back to the community
- Your child is FREE when you coach



2024 Pop Whalen Ice Arena Advertising Opportunities



Dasher Board

Thin vinyl ad mounted directly on dasher boards as pictured above. High visibility. 32"x96"



Banner

36" x 48" ad mounted on wall visible from most of the arena as pictured above.

Ad Guidelines

- Dasher Board ad size 32" high x 96" wide
- Banner ad size 36" high x 48" wide
- Dasher material should be "Oracal 365 adhesive back with clear laminate or 3M UV laminate over vinyl"
- Banners shall be vinyl-based material

To purchase an Ad

- Fill out form below and return with payment to:
 - Friends of Pop Whalen, PO Box 1140, Wolfeboro, NH 03894

How to create your Dasher or Banner advertisement:

- Contact local sign shop to design and order your ad
 - JC Signs 603-569-5335
 - Harriman Sign and Design 603-630-8008

To order a replacement ad, contact the sign shops above.

- Have the ad delivered to the Pop Whalen Arena.
- Arena staff will install your advertisement as soon as it is received, and payment is complete.

Year-round visibility of your advertisement not only provides your company promotion, but it also creates a way in which you can help support the community. Ad periods renew annually and run from January 1 to December 31.

Business Name:		Contact Name:	
Street Address:			
City, State, ZIP:			
Phone:		Cell:	Email:
Type of Advertisement:			
<input type="checkbox"/> Banner Ad 36" x 48" \$750 for 1 year (3-year term)			
<input type="checkbox"/> Dasher Board Ad 32" x 96" \$1000 for 1 year (3-year term)			
<input type="checkbox"/> One Time \$75 fee for Lexan to protect dasher ad			
Payment Enclosed:			
Special Instructions/Requests:			



Program Registration Form

Please fill out all information on this form clearly in black or blue ink.

~~For Fastest Registration, register online at www.wolfeboronh.us/parks-recreation~~

****Note: Information must be filled out completely and Fee must accompany form to be considered complete****

First Name:		Last Name:
Street Address:		City, State, ZIP:
Home Phone:	Work Phone:	Cell Phone:
Parent/Guardian #1 Name:	Parent/Guardian #2 Name:	Email: *Essential for Program Communication*:
Gender:	Date of Birth:	T-Shirt Size:
School:	Grade:	Teacher:

Please write legibly and fill out all applicable information so you are placed in the appropriate level.

PROGRAM REGISTRATION:

Program:	Session:	Level:	Dates:	Time:	Fee:
Total					

Medical Information & Program Waiver

To help ensure the safety and welfare of all children/adults participating/using in the Town of Wolfeboro Parks and Recreation Programs and Facilities, please complete form as part of the registration process. A required Program Waiver Form will be given at the start of each program

In case of emergency, please notify:

Name:	Relationship:	Phone:
Name:	Relationship:	Phone:

Medical Information:

<input type="checkbox"/> Allergy (describe): Are there any medical/psychological details we should know about the participant, or that will enable us to make appropriate accommodations? <input type="checkbox"/> yes <input type="checkbox"/> no If yes, please explain:
--

Drop off this form at Parks and Recreation Offices at Pop Whalen Ice Arena (390 Pine Hill Rd) or mail to:
Parks and Recreation, PO Box 629, Wolfeboro, NH 03894

WINTER CARNIVAL

WOLFEBORO WINTER WONDERLAND

SAVE
THE
DATES

FEBRUARY 22--
MARCH 1

WE ARE
CURRENTLY
WORKING ON THE
SCHEDULE OF
EVENTS!

[HTTPS://WWW.WOLFEBORONH.
US/PARKS-RECREATION](https://www.wolfeboronh.us/parks-recreation)

