

# Cate and Town Parks

Past, Present, and Future

CATE PARK





TOWN PARK  
196

# Ann Inn



# As things once were....



century view was taken from Central Avenue. In the background across



Winter sports are enjoyed on Wolfeboro Bay in front of what was called Ann Inn from 1921 to 1940. When razed to provide space for a service station, its salvage helped build a ski hut for the Abenaki Outing Club. Over the years, it had been known

# Key events in Cate Park history

- Judge Sewell gives land for docking
- Squatters move in and businesses are built
- Property is 'owned' by Sherman Brummitt
- Town acquires property
- Ann Inn is demolished, fill brought in, covering town docks
- Cate Park established, 1940



# The Esso Station

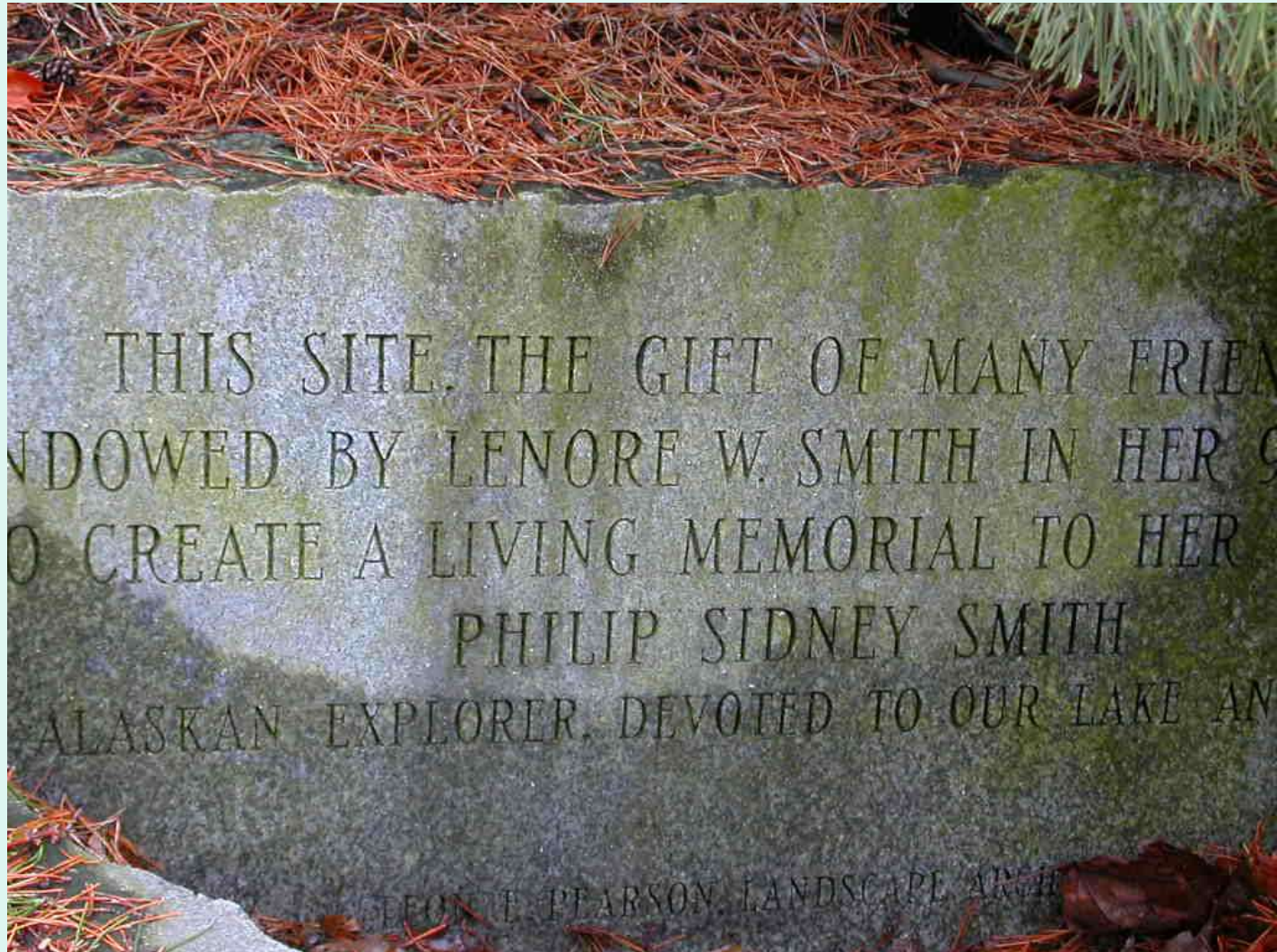


# Key Events in Town Park's History

- March, 1966 at town meeting, warrant article to buy Esso property is defeated
- Phillip Sidney Smith family offer a donation of \$20,000 as a basis to fund a park on the property
- Dolly Bovaird headed a fund raising group
- Town voters approve spending the \$4000 to buy the land and establish the park



# Generous benefactors



# Posts and Lamps







# Bandstand

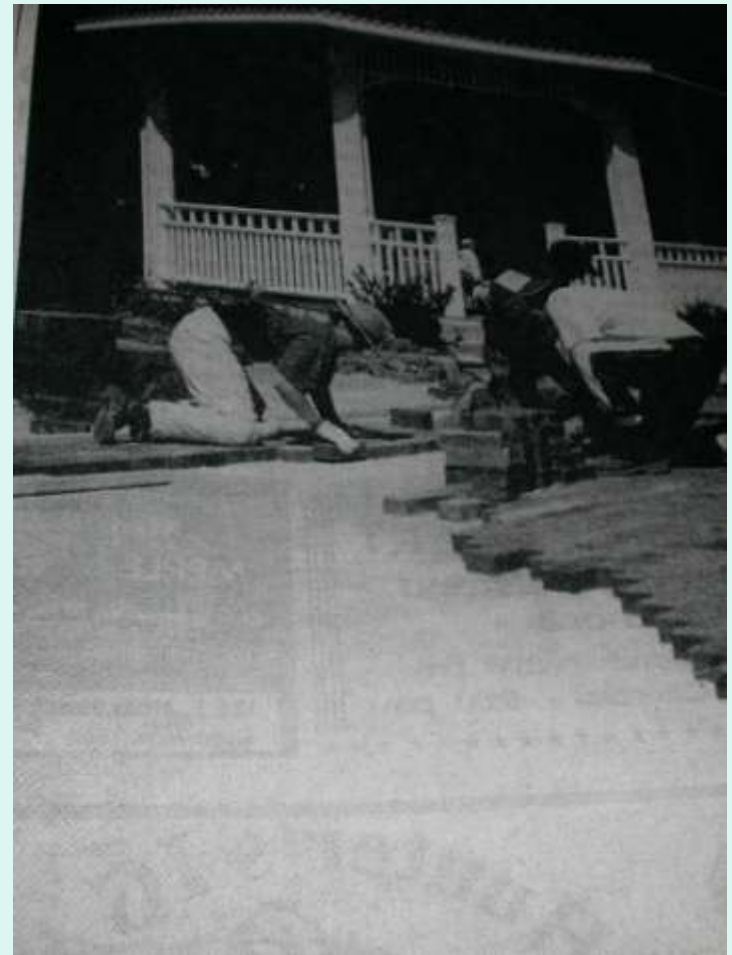


# Groundbreaking for bandstand



Ground was broken Monday morning for the Community Bandstand at Cate Park, in Wolfeboro. On hand for the occasion were, from left, Carol and Doug Cady, respectively director and president of the Wolfeboro Community Bandstand Inc. and Paul Harriman, whose construction firm is in

# Adding brick walkway



# Summer, 2004













# The boundary between the parks



# The Oval



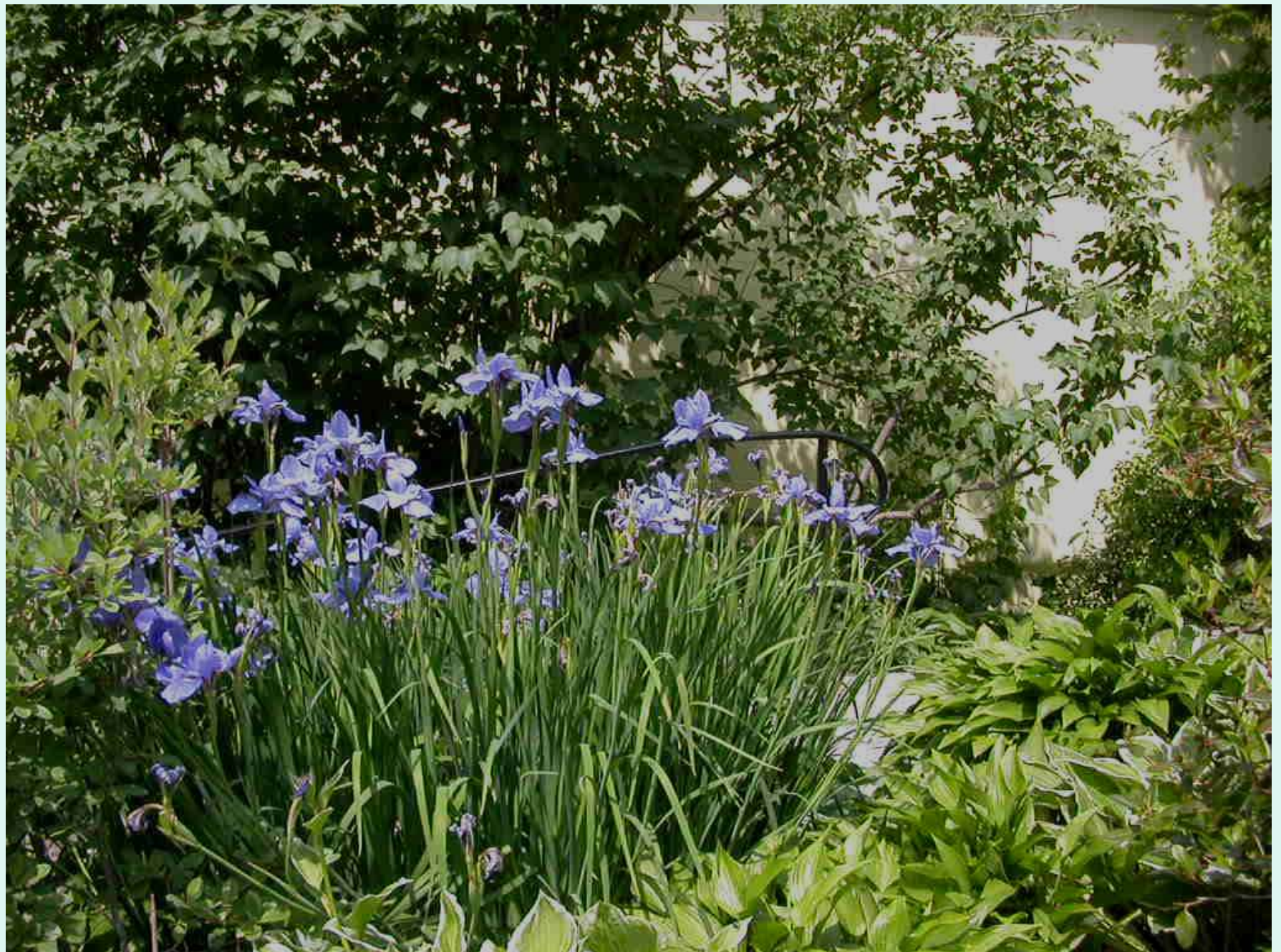






TOWN PARK  
1967

















Viburnum





# Mugo pine





TOWN PARK

196





# INVASIVE SPECIES

- Winged Euonymous is an invasive species and has been placed on the New Hampshire Prohibited List as of January, 2007.
- No selling, transporting, or transplanting will be allowed.

# Many thanks to

- Harrison Moore
- Wolfeboro Historical Society
- Wolfeboro Parks and Rec Department
- Di Simpson
- Trustees of the Trust Funds







- For more information on plants or invasive species, contact the Carroll County Cooperative Extension office 447-3834
- Or the Family, Home and Garden Education Center 1-877-EXT-GROW
- (1-877-398-4769)
- Or email Cooperative Extension at [answers@unh.edu](mailto:answers@unh.edu) or go to their website [ceinfo.unh.edu](http://ceinfo.unh.edu)



And finally,

What questions do you have?

What didn't I tell you that you wish I had?

What suggestions do you have for future presentations?