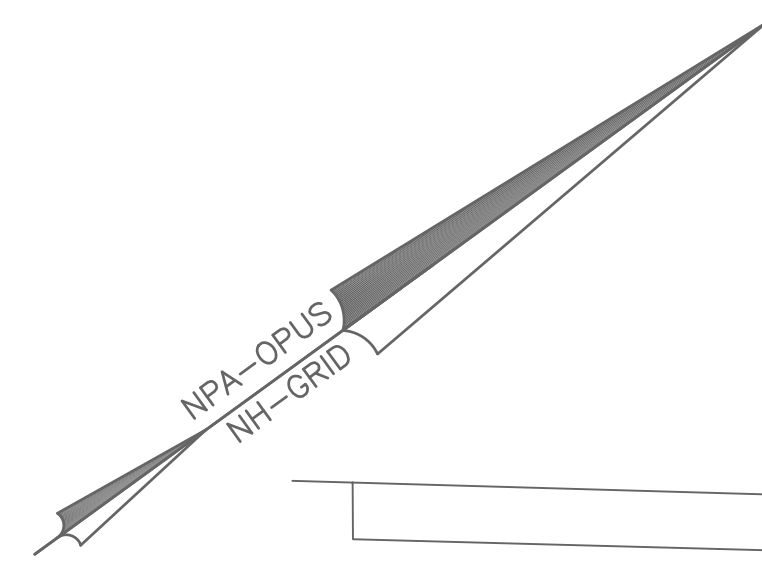
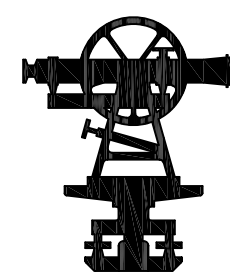


PRELIMINARY

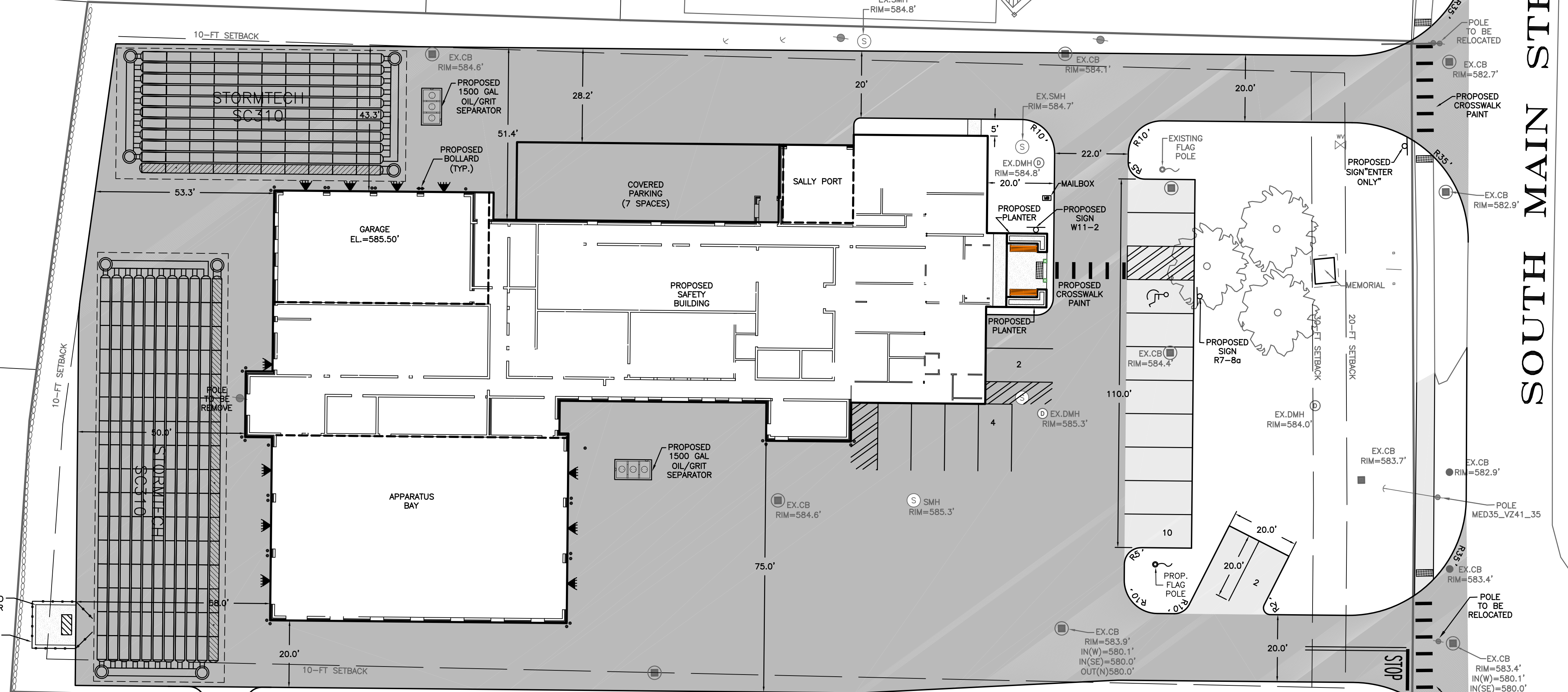
LEGEND

- PROPERTY LINE
- JURISDICTIONAL WETLANDS
- EXISTING TREE LINE
- EXISTING OVERHEAD WIRES
- EXISTING HYDRANT
- EXISTING WATER GATE OR SHUT-OFF VALVE
- EXISTING UTILITY POLE
- EXISTING SEWER MAN HOLE
- EXISTING CATCH BASIN
- EXISTING LIGHT POLES
- PROPOSED BUILDING
- PROPOSED PAVEMENT
- PROPOSED PAVEMENT W/ VERTICAL GRANITE CURBING
- PROPOSED TREE LINE
- PROPOSED HEAVY PAVEMENT (43,000 SF)
- PROPOSED PAVEMENT (2,700 SF)
- PROPOSED SIDEWALK (500SF)
- PROPOSED CONCRETE
- PROPOSED DETECTABLE WARNING PAVERS
- PROPOSED SIGNS
- VERTICAL GRANITE CURB
- SLOPE GRANITE CURB
- CAPE CODE BERM
- PAVEMENT RADIUS (20')
- PROPOSED STANDARD PARKING SPACES (10'x20')
- PROPOSED VAN ACCESSIBLE PARKING SPACES (10' x 20' WITH 10' x 20' ACCESS ISLE)

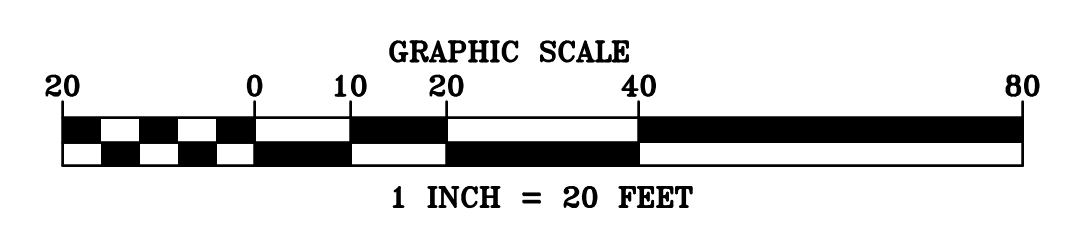


SOUTH MAIN STREET (RTE 28)

CHRISTIAN RIDGE



**SITE LAYOUT PLAN**  
**TAX MAP 231, LOT 57**  
**251 SOUTH MAIN STREET**  
**CARROLL COUNTY**  
**WOLFEBORO, N.H.**  
 PREPARED FOR:  
**TOWN OF WOLFEBORO**  
 JANUARY 2023



CAREFULLY REVIEW ALL SHEETS OF THIS PACKAGE TO INSURE PROPER CONSTRUCTION. SPECIFIC SITE CONDITIONS SHOULD BE EXPLORED PRIOR TO CONSTRUCTION. CONTACT BOTH THE DESIGN ENGINEER AND THE PROJECT OWNER FOR ANY AVAILABLE GEOTECHNICAL OR HYDROGEOLOGICAL INFORMATION AVAILABLE BUT NOT CONTAINED WITH IN THE PLAN SET. IF THERE ARE ANY QUESTIONS WITH THE DESIGN PRESENTED IN THIS PLAN SET PLEASE CONTACT THE ENGINEERING STAFF AT NORWAY PLAINS ASSOCIATES, INC. (603)-335-3948.

FILE NO. xxx  
 PLAN NO. C-xxx  
 DWG. NO. 22364 SP-1  
 F.B. NO.

Drawing Location: M:\2022\22364\DWG\22364 SP-1.dwg  
 File: 20 Jan 2023 - 11:02am